

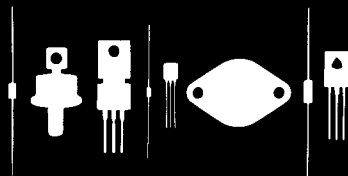
Central
Semiconductor Corp.

Central
Semiconductor Corp.

Central
Semiconductor Corp.

Central™
Semiconductor Corp.

145 Adams Avenue
Hauppauge, New York 11788



CRSH60KD SERIES

60 AMP, 40 THRU 60 VOLTS
CENTER TAP SCHOTTKY RECTIFIER

JEDEC TO-3 CASE

DESCRIPTION

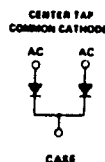
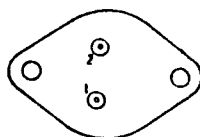
The CENTRAL SEMICONDUCTOR CRSH60KD series types are 60 amp center tapped schottky rectifiers mounted in a hermetically sealed JEDEC TO-3 case designed for applications requiring low forward drop and instantaneous reverse recovery times.

MAXIMUM RATINGS ($T_A=25^\circ\text{C}$ unless otherwise noted)

<u>SYMBOL</u>	<u>CRSH60KD-4</u>	<u>CRSH60KD-5</u>	<u>CRSH60KD-6</u>	<u>UNIT</u>
V_{RRM}	40	50	60	V
V_R	40	50	60	V
$V_R(\text{RMS})$	28	35	42	V
I_O @ 50% DUTY CYCLE		30		A
$I_{FSM, \frac{1}{2} \text{ CYCLE, } 60\text{Hz}}$		600		A
T_J, T_{STG}		-65 TO +175		$^\circ\text{C}$
$\theta_{JC}(\text{PER LEG})$		1.4		$^\circ\text{C/W}$

ELECTRICAL CHARACTERISTICS ($T_C=25^\circ\text{C}$ unless otherwise noted)

<u>SYMBOL</u>	<u>TEST CONDITIONS</u>	<u>MIN</u>	<u>MAX</u>	<u>UNIT</u>
V_F	$I_F=30\text{A PER LEG}$		0.74	V
V_F	$I_F=60\text{A PER LEG}$		0.92	V
I_R	$V_R=\text{Rated } V_{RRM}$		10	mA
I_R	$V_R=\text{Rated } V_{RRM}, T_C=125^\circ\text{C}$		25	mA
C_J	$V_R=5.0\text{V}$		2000	pF



Central™
Semiconductor Corp.

145 Adams Avenue
Hauppauge, NY 11788 USA
Tel: (631) 435-1110 • Fax: (631) 435-1824
www.centralsemi.com

OUTSTANDING SUPPORT AND SUPERIOR SERVICES



PRODUCT SUPPORT

Central's operations team provides the highest level of support to insure product is delivered on-time.

- Supply management (Customer portals)
- Inventory bonding
- Consolidated shipping options
- Custom bar coding for shipments
- Custom product packing

DESIGNER SUPPORT/SERVICES

Central's applications engineering team is ready to discuss your design challenges. Just ask.

- Free quick ship samples (2nd day air)
- Online technical data and parametric search
- SPICE models
- Custom electrical curves
- Environmental regulation compliance
- Customer specific screening
- Up-screening capabilities
- Special wafer diffusions
- PbSn plating options
- Package details
- Application notes
- Application and design sample kits
- Custom product and package development

REQUESTING PRODUCT PLATING

1. If requesting Tin/Lead plated devices, add the suffix "TIN/LEAD" to the part number when ordering (example: 2N2222A TIN/LEAD).
2. If requesting Lead (Pb) Free plated devices, add the suffix "PBFREE" to the part number when ordering (example: 2N2222A PBFREE).

CONTACT US

Corporate Headquarters & Customer Support Team

Central Semiconductor Corp.
145 Adams Avenue
Hauppauge, NY 11788 USA
Main Tel: (631) 435-1110
Main Fax: (631) 435-1824
Support Team Fax: (631) 435-3388
www.centrasemi.com

Worldwide Field Representatives:
www.centrasemi.com/wwreps

Worldwide Distributors:
www.centrasemi.com/wwdistributors

For the latest version of Central Semiconductor's **LIMITATIONS AND DAMAGES DISCLAIMER**, which is part of Central's Standard Terms and Conditions of sale, visit: www.centrasemi.com/terms